

Nettcalco

www.nettcalco.com.pe



About us

We knit trust, quality, and innovation to fuel the industry's responsible (r)evolution.



Vertically integrated.

From knitting to finished product, located in Peru with **60 years of experience** in the export market.



Our annual sales range from US\$70M to US\$90M.

With an exceptional workforce of 1,500 employees.



Duty-free access across key markets.

Such as USA, Canada, Mexico, Mercosur, Europe, Japan, China, Australia, among others



Main Strength: Our People

Capacity to retain high skill workers
Technical team with vast experience

Our Facilities

Operations at our production plants: Vulcano and Cercado / Capacity: 600kp

Vulcano



Processes: knitting, yarn dyeing, fabric dyeing, digital fabric printing, cutting, sewing (30%), embroidery, and positioning printing.

Address: Cal. Cinco Nro. 115 Z.I. Vulcano – Ate, Perú



Cercado



Processes: sewing (70%), finishing, packaging, laundry, final auditing, and shipping processes.

Address: Cal. Rodolfo Beltrán 984 – Cercado de Lima, Perú



Our Partners

TRUSTED BY LEADING BRANDS

L.L.Bean

1992

LANDS' END 

1993

Hanna Andersson


1996


LACOSTE

2000

RICARDO
ALMEIDA

2010

 *travis Mathew*

2022

LAKE

2023

**ROLLER
RABBIT**

2025


FAHERTY

2025



Our Strengths

More than a Vendor – a Strategic Growth Partner.



Consistency quality

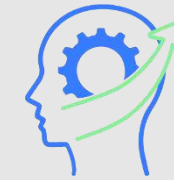
Reliable execution on core programs, every season.

In-house Lab



Agile development & execution

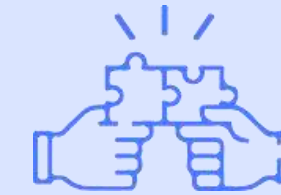
Fast-to-market cycles with cross functional teams.



Material innovation

New blend fabrics, sustainable options, expanded categories.

Natural / Man-Made / Blends / New



Long-term vision

Structured for lasting, partnerships and future growth.

OPERATIONS

End-to-end integration

- Single point of accountability
- Seamless supply chain coordination
- From concept to delivery
 - Cost oriented proposals

TRANSPARENCY

Traceability platform

- Yarn origin to final product tracking
- Full IT department in-house
- Full supply chain visibility in records

EXPERTISE

Technical team strength

- Solution-oriented engineers
- Camera detection
- Investment in new technology
- Experienced professionals in each area

Vertical Integrated Excellence

KNITTING

+ Flat Knits
+ Twills



DYEING / DIGITAL PRINT



EMBROIDERY / SCREEN PRINT



CUTTING



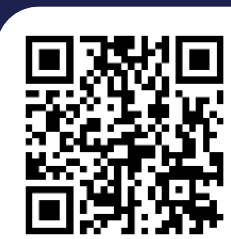
SEWING



FINISHING / Export



YARN DYEING
SEWING THREAD DYEING
(DCORE, 100% Polyester)



In-house integrated Oracle platform - Traceability
Full control of operations = Consistency
Real time data from all sectors – Key Decisions
0.3% NCR - Quality built in

Blockchain Traceability

Immutable Information

(Written in Stone)

It is mathematically impossible to modify or delete it.

Radical Transparency

We show who, when, and how their garment was made.

Decentralized Verification

We don't ask people to "just take our word for it." We deliver a digital proof that anyone can audit externally.

Regulatory Compliance

(Digital Product Passport)

We are staying ahead of upcoming EU and USA regulations regarding Digital Product Passports.

SEASON 2025
Ss T-shirt Crew Neck #TH8621
NOIR First Quality Garment Made in Peru

ORIGIN 2025-11-13

Raw Material

The process begins with High Quality Fibers from the valleys of Lima (perú) (Cotton Pima 44/1 Elegant Cotton Combed With Wax). We select exclusively high-quality fibers to ensure a superior product.

KNITTING 2025-12-23

Knitting

We use state-of-the-art equipment to develop various fabric types. A great team formed by Jimmy, Giovany and 3 more experts monitored every revolution to create a perfect textile structure.

PROTAGONISTS 5

- Jimmy Mogollon - KNITTER
- Giovany Ramirez - KNITTER
- Nilo De La Cruz - KNITTER
- Heriberto Justo - KNITTER
- Oscar Vidarte - KNITTER

DYEING 2025-12-26

Fabric Dyeing

ZDHC MRSL V3.1 Certified 87.5% COMPLIANT
Level 3 compliance with zero discharge of hazardous chemicals standards.

CHEMICAL INPUTS USED: (7/8)

- ANTIMUSSOL UDF.BR LIQ. COMPLIANT
- SARABID LDR NO DATA
- SAL MOLIDA EXTRA (NaCl)/CLORUR COMPLIANT
- ACIDO ACETICO GLACIAL COMPLIANT
- NEUTRACIO NCS COMPLIANT
- BIAVIN BPA COMPLIANT
- SODA CAUSTICA PERLAS(LABOR) COMPLIANT
- COTOBLANC PCA COMPLIANT

Process performed in specialized equipment (Brazzoli/Fongs) to ensure color fastness of "NOIR" following rigorous technical and sustainable standards.

PROTAGONISTS 2

- Pedro Campos - FINISHING
- Cristian Pizango - OPENING

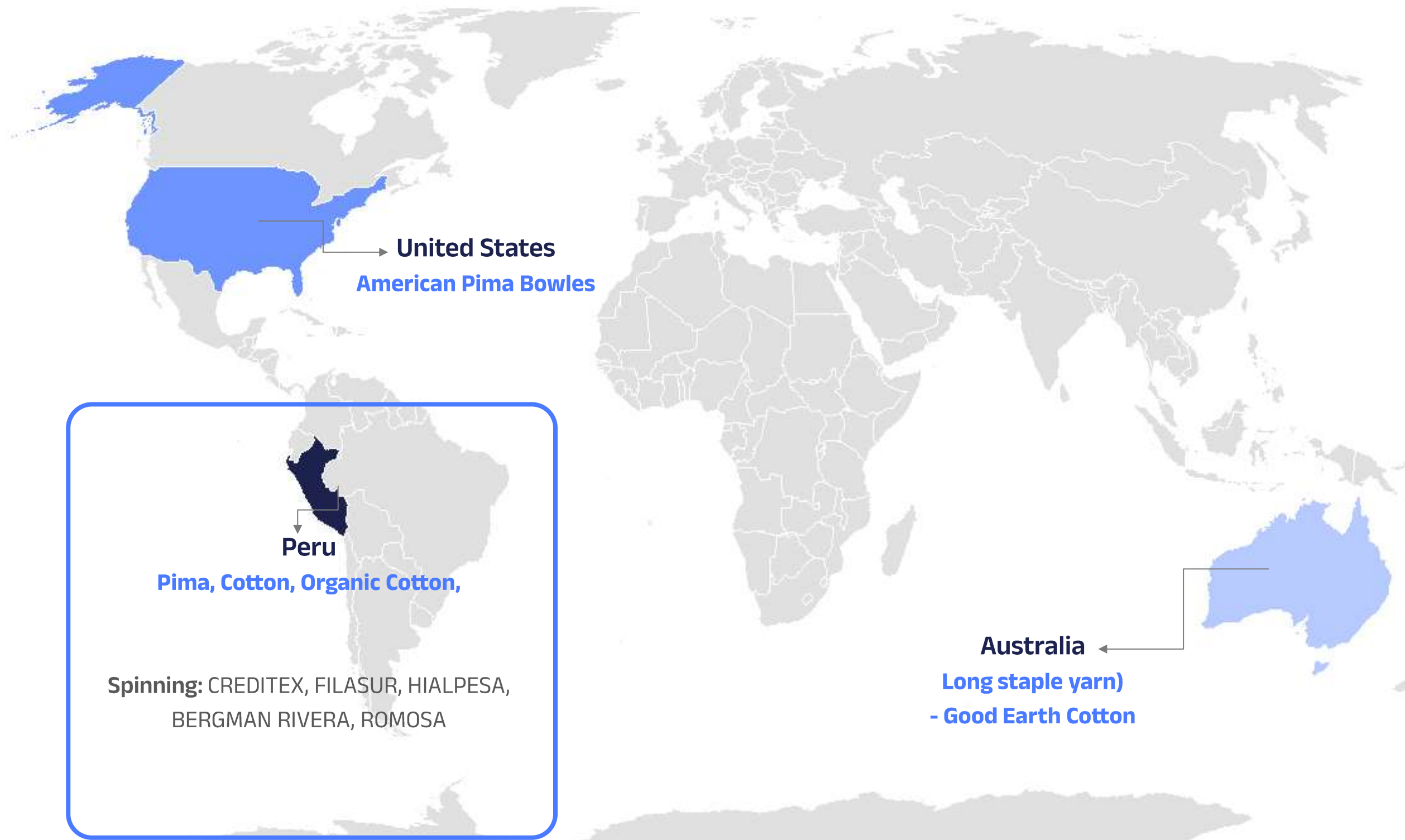


ID: 092705104114

Scan for
TRACEABILITY

Supply Chain of Raw Materials

Cotton :



From Proven Origins to Trusted Quality

ORITAIN:

Peru

Low Risk Region

— Tested by season

Other:

Polyester & Nylon:

USA: Unify (Recycled - GRS) / Texfina

Modal:

Austria: Lenzing Modal™

Spandex:

USA: LYCRA®

Regenegri Proyect: Actively seeking more suppliers
Traceability Project extension: Yarn suppliers enter information into our system



Best in Class Service: On Time Production



NETTALCO leads the region in on-time performance
Scorecards with our clients +80%.



Capacity Optimization – Early Production & Storage

Smart use of capacity during low-demand windows to produce early and hold stock safely. (Anticipation)



VMI (Continue Replenishment)

Volume programs (never out of stock)
Tees LT: 8-10 weeks Polos LT: 10-12 weeks
** Depending on complexity*



Production organized based on a Genetic Algorithm

Sewing lines are arranged considering the data and efficiency of the workers.



Automation

Tablets throughout the factory
Cameras in Dyeing house & voice recognition devices throughout the measuring process
3D Capability (CLO)
Specialized Auto Machines



Quality you can Measure & Trust



Correlated with Bureau Veritas (BV)

Land's End, L.L.Bean, & Lacoste (certification process)



In many factories, quality is judged by the “look” or “feel.”

→ **High performance DATA**

We test, trace, and verify every batch to guarantee **consistent color, handfeel, and durability** across production.

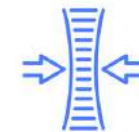
Keep each batch for 2 years



Dimensional Stability
(Shrinkage Test)



Pilling Resistance



Tensile / Tear Strength



Color Fastness to Washing



Color Fastness to Heat / Ironing

Premium Knit Expertise

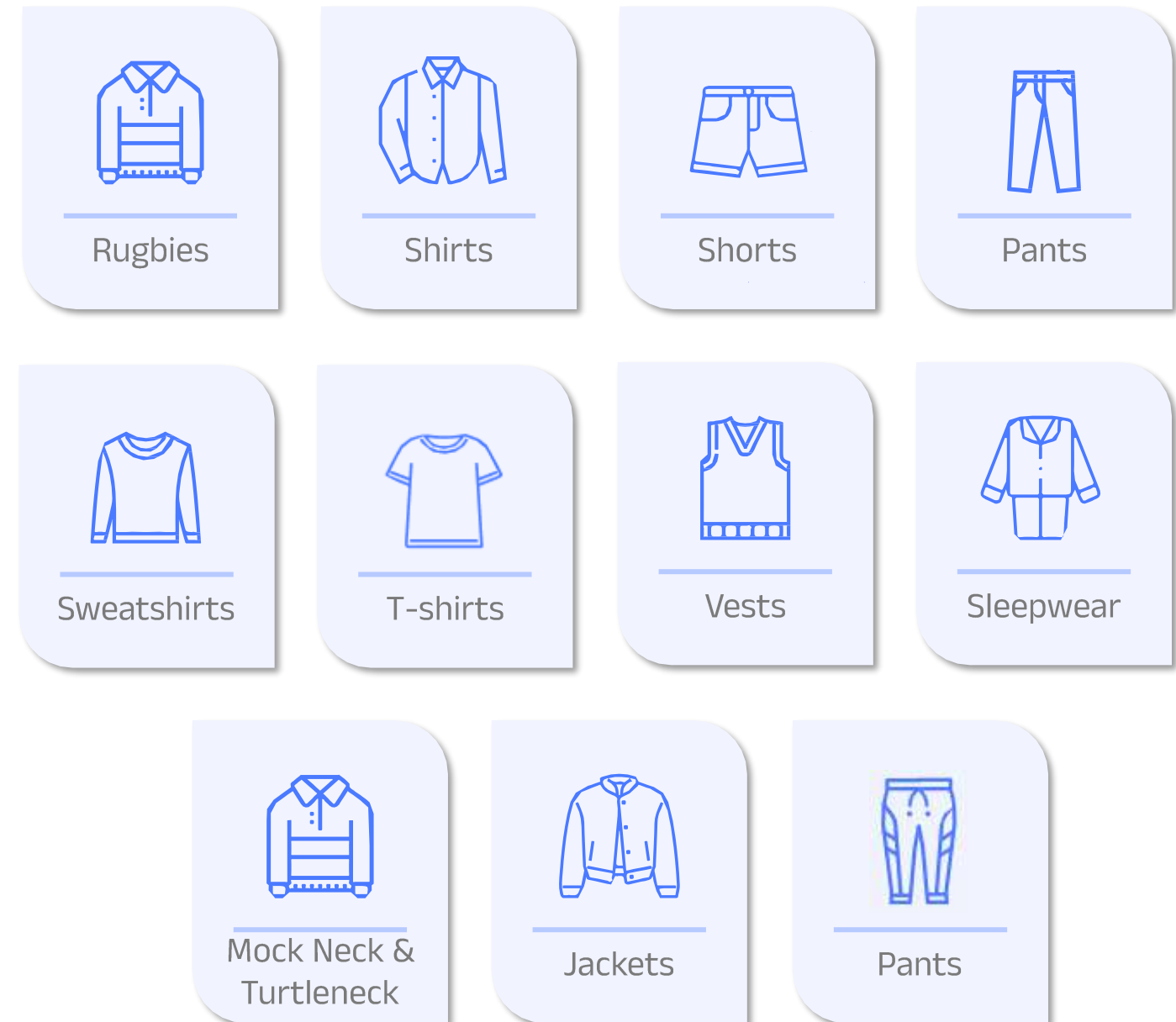
Knit Garments

Structures: jersey, interlocks, piqué, double-faced, waffles, jacquards.



Every garment that we make has a [traceability QR](#)

Product Category



SUSTAINABILITY Water



MONITORING



Process- and plant-level water monitoring using intensity indicators.



Implement reduction initiatives



Third-party (ZDHC, GRS) and continuous internal wastewater tests.



TBD

OUR NEW WWTP



Biological WWTP implemented to complement PC treatment.



Improve the recovery ratio

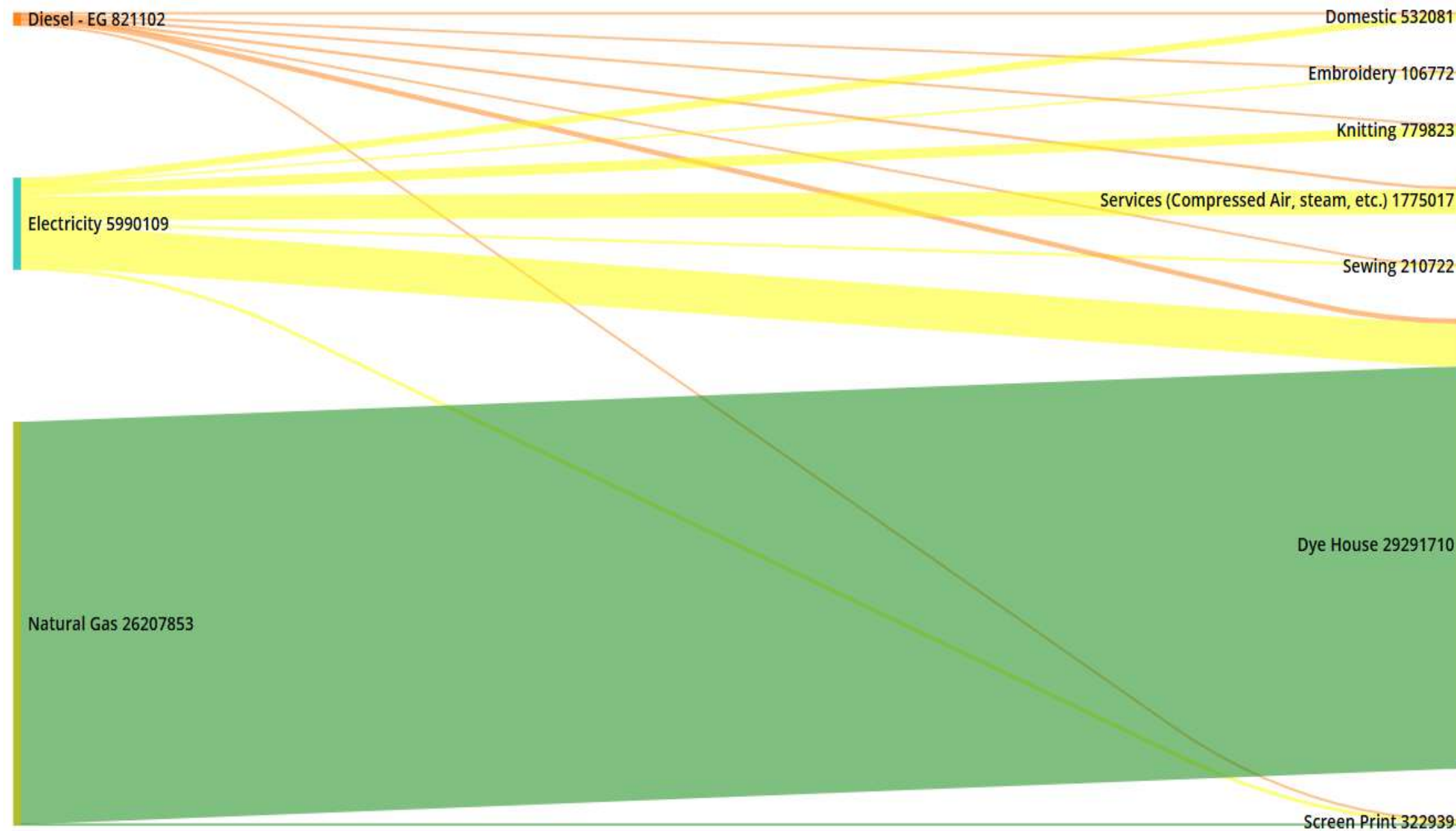


We currently recover 34% of our industrial effluent. That is 6,900m³/month.



Our aim is to reach **70%**.

SUSTAINABILITY Energy



Our way to a low-carbon production

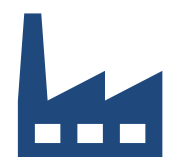
- Decarbonization roadmap validated by SBTi.**
- Working on our decarbonization plan**

Usage Monitoring

- Energy consumption monitored at plant level**
-

Decarbonization plan

Nettalco has established 2022 as its baseline year, with total emissions of approximately 52,275 tCO₂e, distributed as follows: Scope 1 (19%), Scope 2 (8%), and Scope 3 (73%). We aim to reduce 47.2% of our scopes 1 & 2 and 25% of scope 3.



Scope 1 Direct emissions

- Fuel switch (e.g., LPG to natural gas).
- Fleet efficiency (e.g., CNG transition).
- Thermal process optimization.
- Operational efficiency projects



Scope 2 Electricity consumption

- 100% renewable electricity.
- On-site solar generation.
- Full LED implementation.
- Energy efficiency programs.



Scope 3 Value chain emissions

- Supplier engagement.
- Sustainable procurement criteria.
- Logistics optimization.
- Eco-driving practices.
- Employee mobility & hybrid work.
- Circular economy & waste valorization.

SUSTAINABILITY Chemicals

← Detalle Producto 8364 - SYN.NAVY BLUE KGF(NVO22LABOR)

3.1.- Números CAS

No.	Nro CAS	% de Compuesto	Conformidad MRSL
1	93051-44-6	50-60%	OK
1 total			

3.2.- Declaraciones de peligrosidad - H-Statements

No.	Código H-Statement	Descripción	Conformidad H
1	H412	Nocivo para la vida acuática con efectos duraderos	OK
1 total			

Our own chemical inventory

- Digitalized and updated our inventory. FIFO + FEFO controls for better usage.
- Work on document-management automatization.

Zero Discharge of Hazardous Chemicals

- Achieved ZDHC Supplier to Zero program - Level 2 (audit).
- Keep improving our systems and data collection.

Verification of Achievement

Based on document desktop review, this document acknowledges

Industrias Nettalco S.A.

A855XZ86

has completed Supplier to Zero (Level 2) on 25.02.2026 according to the Progressive level requirements - The document desktop review was conducted and supervised by Leadership & Sustainability Karin Ekberg GmbH.*

Frank Michel
ZDHC
Executive Director

13307-5618-7ED
Document Control
Number

Powered by IMPLEMENTATION HUB

*Acknowledgement valid until 25th February 2027

SUSTAINABILITY

Solid Waste

Reducing waste, increasing value.

OPERATIONAL EFFICIENCY

We have dedicated **textile waste areas, advanced containers**, and a **comprehensive labeling system** indicating PO, client & composition (100% cotton or blend) for improved waste management.



WASTE INNOVATION

R&D partnerships with universities (PUCP, UNALM) to **upcycle textile waste**. We have already produced our own textile bricks.



SUSTAINABLE REUSE

Under the CE “Conitos Retornables” program, plastic cones are **collected, cleaned & re-spun** by our supplier, ensuring materials are **reintroduced** into their production cycle.



TEXTILE WASTE

We have previously **recycled 6,000 Kg of cutting textile waste** and turned it into blankets that we donated.



Smart Camaras & Defect Detection



Dyeing Machines: smart cameras that automatically detect process failures and delays in dyeing operations.

Knitting: Purchasing 4 Knit-I systems for automatic detection. (Successful trials)

Drying machines: we have developed with PUCP a project to do automated defect detection with AI.

CLO 3D Platform – Pre Production reduction LT



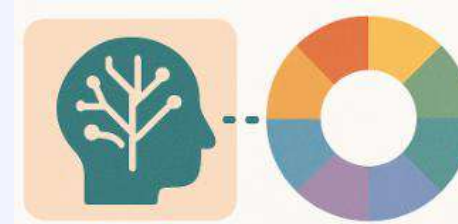
We have substantial **experience (since 2020)** using 3D software CLO for product for Protos, Fitting, Heat map, Stretch maps.

3D Printed Tools



Improve precision and efficiency in sewing and cutting.

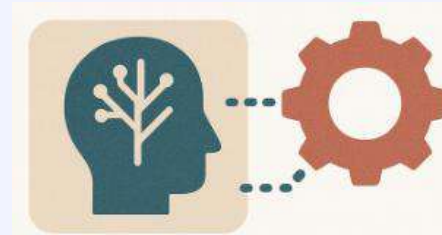
AI Colorist



AI tools that selects and **adjusts dyeing recipes based on historical data** and learned rules.

We reduced the number of tries from 2.59 to 1.59, the time to produce a recipe went from 8-10 mins to 30 sec.

AI – Based Planning Systems



Genetic algorithm that optimizes task distribution across sewing operators.

University projects - Circular economy



UNALM – Project to develop **biobased materials from Cellulose + fungi**



PUCP – We started a project **to develop construction/isolation materials** with the students of industrial design.

Community programs

How we engage with our surroundings

EMPLOYEE ENGAGEMENT & CULTURE

Since 2023, **NETTALCO with Bergman Rivera** have brought Christmas to almost 400 kids in Chinchá, where some of our cotton comes from. We provided them with panettone, hot chocolate and a gift.



VOLUNTEERING PROGRAMS

This is how we started our CSR projects.

2024

- Planted 50 trees.
- Collected 250 Kg of waste from a nearby riverbank.

2025

- Planted 150 trees.
- Collect +500 Kg of waste from riverbanks or beaches.



Community programs

How we engage with our surroundings

Chincha's Nurseries

Hanna Andersson
Bergman/Rivera

Women Advancement Program

- Our aim is to evaluate costs associated with violence against women in Nettalco.
- During June all employees filled a questionnaire to map violence in their households or in the workplace
- The consultant company will later propose lines of action to tackle this matter in a diagnosis report.



Resilient Communities

to low temperatures in the Province of Melgar – Puno Region, Peru, 2023.

OBJETIVES

Support vulnerable communities in the Peruvian Andes to survive extreme low temperatures.

 Home Improvement Heating & Kitchen	 Health Improvement Medical Campaigns	 Animal Health Improvement Animal Health Campaigns	 Risk management Committees formed & risk maps
--	--	---	---



BENEFITS

Promote physical wellbeing and foster emotional bonds with communities.

20 Homes Improved	130 families & 550 people Participated in Medical Campaigns	226 families Participated in Animal Health Campaigns
-----------------------------	---	--



BUDGET

Because investing in time, effort, and actions goes beyond our financial resources.

--	--



Our Social Components

How do we take care of our own?

Employee Well-being & Benefits

- Expanded health program including counseling, dental care and physical therapy for employees and families.
- Additional wellness services to support both physical and emotional health.
- Zero fatal accidents across operations, reinforcing a strong safety culture.



Talent Development & Training

- Over 6,200 training hours delivered in 2025 to strengthen technical and professional skills.
- Continuous expansion of training programs to support employee growth.
- Targeted training initiatives and sign language programs aimed at promoting inclusion and developing the capabilities of our workforce.



Employee Engagement & Culture

- Initiatives promoting open communication between employees and management (e.g., direct dialogue spaces).
- Strong focus on inclusive and sustainable workplace culture.
- High hiring growth (+33.33%) supporting workforce expansion and opportunities.



Our Social Components

How do we take care of our own?

Talent Development & Training

- Donation of 154 laptops to employees' children entering higher education.
- Programs supporting employees' families as part of a broader well-being strategy.
- Focus on long-term social mobility through access to education.



Governance and Compliance of the Social Management System

- Initiatives promoting open communication between employees and management (e.g., direct dialogue spaces).
- Strong focus on inclusive and sustainable workplace culture.
- High hiring growth (+33.33%) supporting workforce expansion and opportunities.



Certifications

These accreditations support our practices throughout the value chain, from raw materials to the final product, ensuring compliance with the highest environmental, social, and traceability standards.

